



Wireless

Internet and Printing

Wireless internet access for Windows:

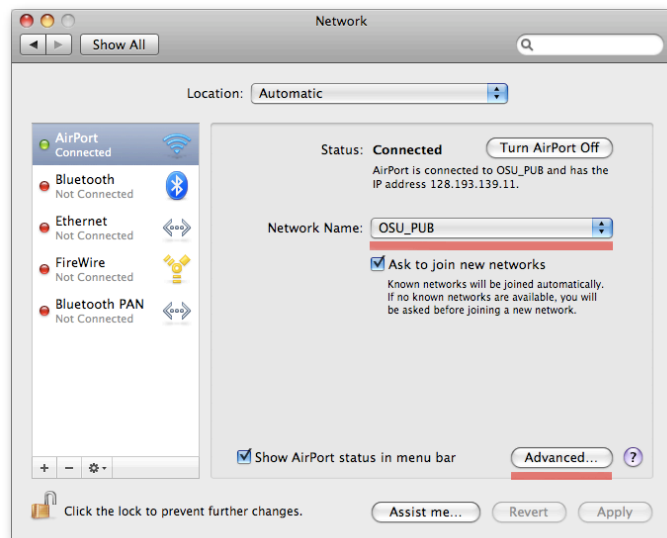
OSU gives internet access to authorized people through a submission of what is called a “MAC address.” Here are the steps of how to find the MAC address on Windows.

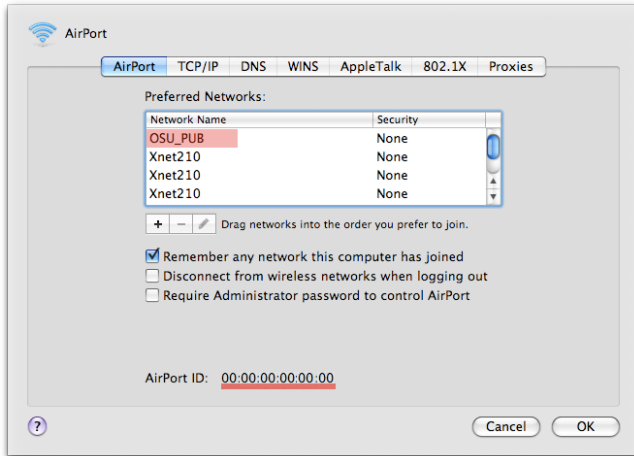
1. Click “Start” and then choose “Run.”
2. In the “Open” dialog box, type in “cmd”, and then click “Ok.”
3. Once Command Prompt is running, type “ipconfig /all.”
4. A list will now appear with all of the computer’s different connections. Look for “Physical Address . . . 00-00-00-00-00-00”, this is your MAC address. Note that this address must be for “wireless adapter” and not “Ethernet adapter.”
5. Write down this address. Now simply email this address to either Tim Maddux: (tbmaddux@engr.orst.edu) or Melora Park: (melora.park@oregonstate.edu). They will submit this address to OSU IT support services. Granting access takes one to two days.

Wireless internet access for Mac:

OSU gives internet access to authorized people through a submission of what is called a “MAC address.” Here are the steps of how to find the MAC address on Macintosh.

1. Open System preferences in the applications menu.
2. Click on the “Network” icon.
3. Select “Airport.” In the “Network Name” dialog box select OSU_PUB. Then click “Advanced.”





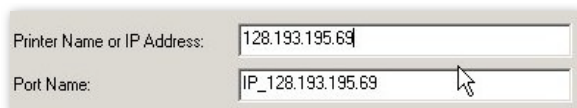
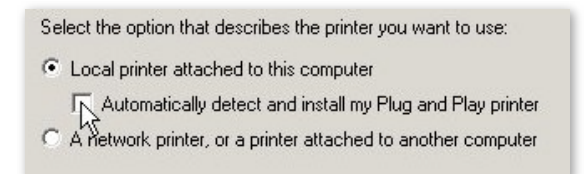
4. In the "Airport" tab, make sure "OSU_PUB" is selected.
5. Look down at the bottom where it says, "AirPort ID", this is your MAC address.
6. Write down this address. Now simply email this address to either Tim Maddux: (tbmaddux@engr.orst.edu) or Melora Park: (melora.park@oregonstate.edu). They will submit this address to OSU IT support services. Granting access takes one to two days.

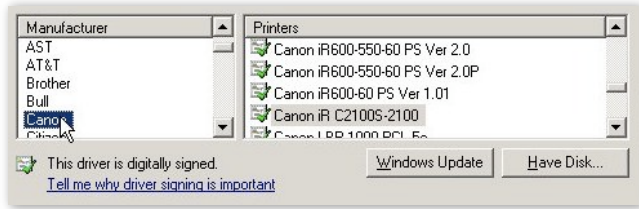
Wireless Printing Access

Printing with Windows:

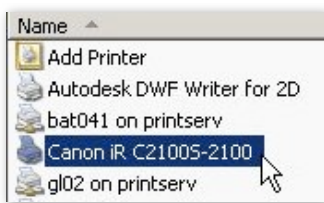
To print wirelessly internet access must be granted from the OSU_PUB router. These instructions are for printing with Canon Copier P9100. Here are the steps of how to print wirelessly.

1. Click "Start", and go to Printers and Faxes, this is in Control Panel.
2. Click "Add Printer". A dialog box will now appear. Click "Next".
3. At the next screen, make sure you **uncheck** the "Automatically detect and install my Plug and Play printer" checkbox, and go ahead and hit "Next".
4. The next screen will ask you for what port you want, select the "**Create New Port**" radio button.
5. Now choose "**Standard TCP/IP Port**".
6. Now go ahead and hit "**Next**". Another dialog box will come up, go ahead and hit "**Next**".
7. The next screen will ask you for IP address or printer name. Enter the follow IP: "**128.193.195.69**" (without quotes) into the IP Address. The Port Name should automatically be chosen.





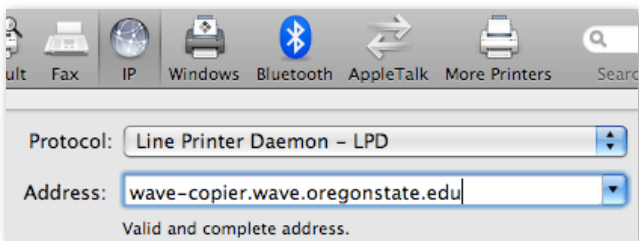
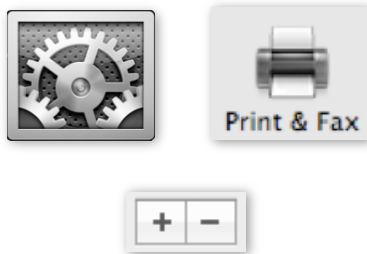
8. Go ahead and hit "**Next**", and then at the last screen, hit "**Finish**".
9. Your computer will now process the request to the printer. This may take a while.
10. Once this is finished, a dialog box will appear. Choose "Canon" as the manufacturer, and "Canon iR C2100S-2100" as the model.
11. If a box appears that says, "Keep Existing Driver," and "Replace Existing Driver," click "Replace" and then "Next."
12. The next box has an option to change the printer's name, just leave it as its default name.
13. In the next few steps you can choose to do varying on what you want to print. If you need to do a test print you can, but its usually not needed.
14. Open up "Printers and Faxes" and it will give you a list of the printers available. The Canon printer should now be a part of this list.

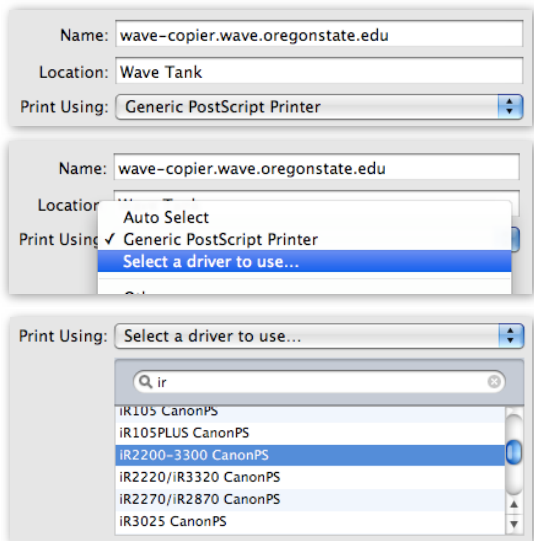


Printing With Macintosh:

To print wirelessly internet access must be granted from the OSU_PUB router. These instructions are for printing with Canon Copier P9100. Here are the steps of how to print wirelessly.

1. Go to System Preferences, and click on "Print & Fax."
2. Then click "Add new printer", it is a plus symbol in the printer window.
3. In the "IP" tab, select "Line Printer Daemon - LPD", then for the Address type, "wave-copier.wave.oregonstate.edu".





4. Next, in the “Print Using” dialog, you will choose, “Select a driver to use...”.
5. Once that is selected, you may have to download the driver from the canonusa.com website, or you can obtain a driver from Melora. After you have installed the correct driver, select “iR2200-3300 CanonPS” in the drive dialog box.
6. Click “Next”, and the printer is ready to use.
7. Do a test print to make sure this process was successful.